



D-Port D.G. ARVANITIS & SON IKE

D-Port Δ.Γ. ΑΡΒΑΝΙΤΗΣ & ΣΙΑ ΙΚΕ

Headquarters: A. Parashou 1, Athens 11 473

Έδρα: Α. Παράσχου 1, Αθήνα 11 473

Productions: Patmou 6, Marousi 15 123

Παραγωγή: Πάτμου 6, Μαρούσι 15 123

Tel: + 30 210 6895057

Mob: 6977711211

Vat: EL 9981 39 448

ΑΦΜ: 9981 39 448 ΙΓ' Αθηνών

[dport.athens@gmail.com](mailto:dport.athens@gmail.com)

<http://dport-productions.gr>

### General presentation.

- The equipment are in very good condition and everything is in working order.
- On-the-spot check-in is available, as well as additional photos and more information about the condition of equipment.

# dport

PRODUCTIONS

D-Port D.G. ARVANITIS & SON IKE

D-Port Δ.Γ. ΑΡΒΑΝΙΤΗΣ & ΣΙΑ ΙΚΕ

Headquarters: A. Parashou 1, Athens 11 473

Έδρα: Α. Παράσχου 1, Αθήνα 11 473

Productions: Patmou 6, Marousi 15 123

Παραγωγή: Πάτμου 6, Μαρούσι 15 123

Tel: + 30 210 6895057

Mob: 6977711211

Vat: EL 9981 39 448

ΑΦΜ: 9981 39 448 ΙΓ' Αθηνών

[dport.athens@gmail.com](mailto:dport.athens@gmail.com)

<http://dport-productions.gr>

## List

- 1. Cameras
- 2. Sound
- 3. Racks
- 4. Editing
- 5. Lights

# 1. CAMERAS

## SONY Cine Alta PMW-F5 Nr 1

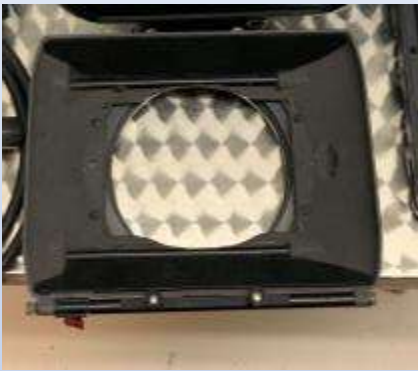
<b>Body:</b> Sony PMW-F5	1
<b>Matte box + cap:</b> Sony.	2
<b>Matte box for rod</b>	1
<b>Remote ctrl panel</b>	1
<b>Connection cable:</b> 30m	1
<b>Case with foam :</b> (black pelican) Soft case	2
<b>Viewfinder:</b> Sony 3.5" LCD	1
<b>Batteries:</b> Sony	2
<b>Rain cover:</b> petrol	1
<b>Power s. for 2 Li-Ion bat.:</b> Sony AC	1
<b>Microphone/ XLR adaptor 2 ch</b>	1
<b>Power supply for camera</b>	1
<b>H. power zoom lense:</b> Sony 18x 140	1
<b>Zoom control for PMW-F3</b>	1
<b>Adaptor Sony:</b> FZ to PL	1
<b>Shoulder rig / Tripod plate</b>	1
<b>HOURS (SYSTEM)</b>	1537



# 1. CAMERAS

SONY Cine Alta PMW-F5.

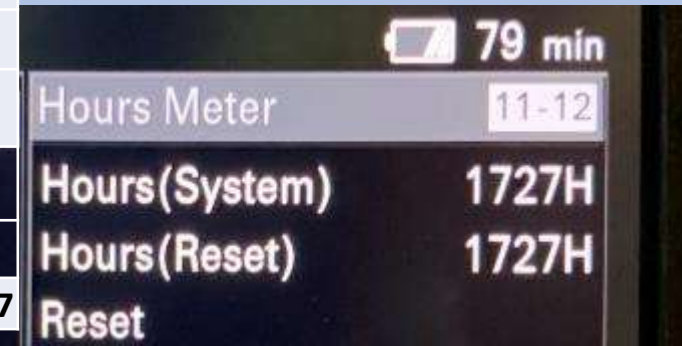
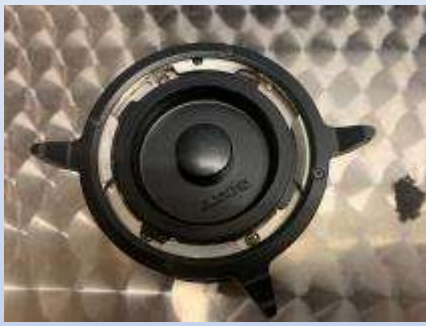
Nr 1



# 1. CAMERAS

## SONY Cine Alta PMW-F5. Nr 2

<b>Body:</b> Sony PMW-F5	1
<b>Matte box + cap:</b> Sony.	2
<b>Matte box for rod</b>	
<b>Remote ctrl panel</b>	1
<b>Connection cable:</b> 30m	1
<b>Case with foam :</b> (black pelican)	2
<b>Soft case</b>	
<b>Viewfinder:</b> Sony 3.5" LCD	1
<b>Batteries:</b> Sony	2
<b>Rain cover</b>	1
<b>Power s. for 2 Li-Ion bat.:</b> Sony AC	1
<b>Microphone/ XLR adaptor 2 ch</b>	1
<b>Power supply for camera</b>	1
<b>H. power zoom lense:</b> Sony 18x 140	1
<b>Zoom control for PMW-F3</b>	1
<b>Adaptor Sony:</b> FZ to PL	1
<b>Shoulder rig / Tripod plate</b>	1
<b>HOUERS (SYSTEM)</b>	1727



# 1. CAMERAS

SONY Cine Alta PMW-F5.

Nr2



# 1. CAMERAS

**SONY Cine Alta PMW-F5** **Nr 3**

<b>Body:</b> Sony PMW-F5	<b>1</b>
<b>Monitor Blackmagic / p. supply</b>	<b>1</b>
<b>Adaptor:</b> Sony FZ to PL	<b>1</b>
<b>Cables for monitor</b>	<b>5</b>
<b>Case: metal</b>	<b>1</b>
<b>Rain cover</b>	<b>1</b>
<b>Power supply for camera</b>	<b>1</b>
<b>HOUERS (SYSTEM)</b>	<b>1505</b>



# 1. CAMERAS

SONY Cine Alta PMW-F5.

Nr 3





# 1. CAMERAS

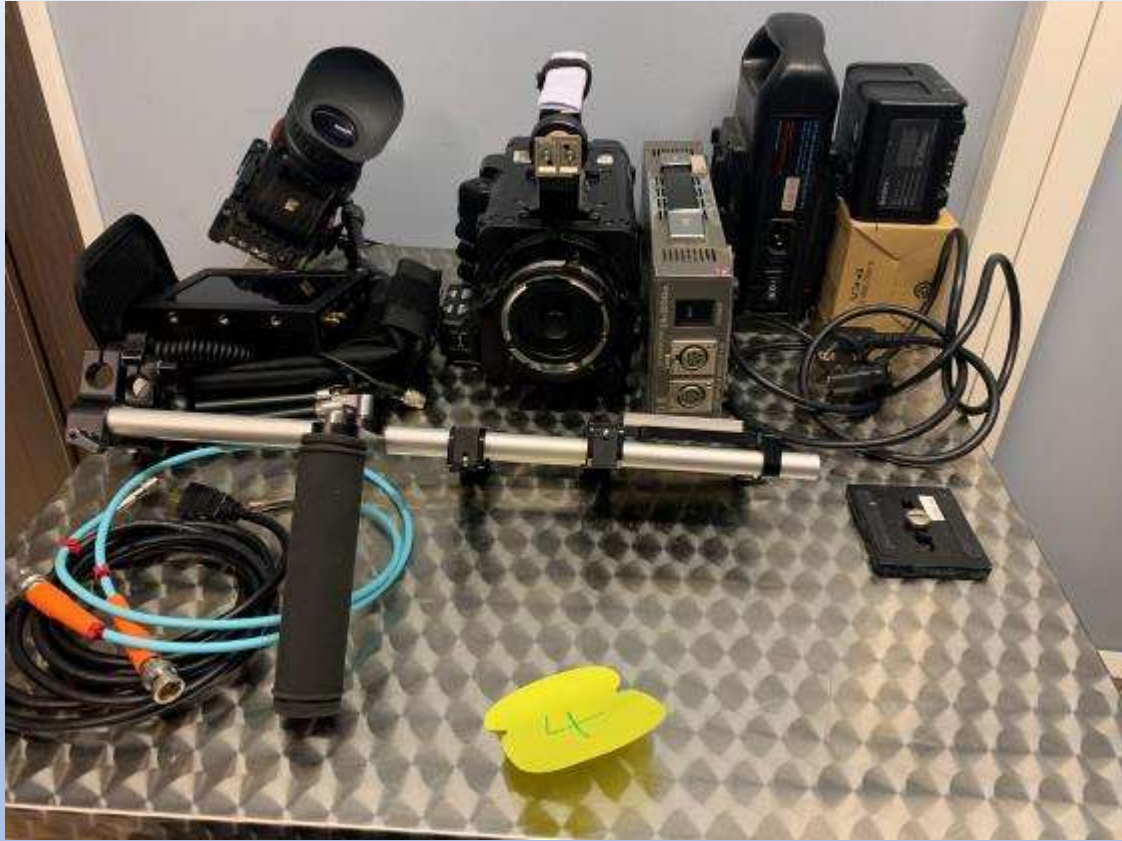
**SONY Cine Alta PMW-F5** **Nr 4**

<b>Body:</b> Sony PMW-F5 4K	<b>1</b>
<b>Monitor:</b> Blackmagic/ p. supply	<b>1</b>
<b>Viewfinder:</b> jacudo	<b>1</b>
<b>Adaptor:</b> Sony FZ to PL	<b>1</b>
<b>Case:</b> with foam pelican	<b>1</b>
<b>Rain cover:</b> H D	<b>1</b>
<b>Power supply for camera</b>	<b>1</b>
<b>Software 4K</b>	<b>4K</b>
<b>Cables for monitor</b>	<b>2</b>
<b>Shoulder rig (Damage) plate for tripod</b>	<b>1</b>
<b>HOUERS (SYSTEM)</b>	<b>1883</b>



# 1. CAMERAS

SONY Cine Alta PMW-F5 Nr 4



# 1. CAMERAS

**G.V. IFINITI MC 1000/10** **Nr 5**

<b>3 Cameras:</b> (1 is working- 2 not working)	<b>3</b>
<b>Remote OCP + power</b> supplies + cables	<b>3</b>
<b>Connection cables:</b> 30m	<b>4</b>
<b>Viewfinder</b>	<b>3</b>
<b>Power supply for cameras</b>	<b>3</b>
<b>Lenses:</b> angenieux (2p. 8,3 x 125/ 1p 5,3 x64)	<b>3</b>
<b>Remote for lenses</b>	<b>2</b>
<b>Rider:</b> g . v	<b>1</b>
<b>Carts</b>	<b>6</b>



# 1. CAMERAS

## RED ONE Nr 6

ITEM DESCRIPTION	QTY
Red One Body	1
BASE PROD. PACK	1
Body Cap	1
Red Drive (Raid)	4
RED Branded Camera Case pelican	1
Case black	1
Red EVF	1
Red LCD	1
DC Power Cable 10ft	1
Drive Cable 2ft. (an box)	4
EVF Cable 10ft	1
LCD Cable 10ft	1
EVF Cable	1
LCD Cable	2
Mini – XLR to XLR	2

## Detailed list for RED ONE

Side Handle	4
Red Rod, SS (24")	2
Focus Hook Set	1
Red Handle - Left-Right	2
Top Handle Extension	1
AC Power Adapter	1
mattebox	1
nikon mount	1
Monitor (external) kroma	1
RED POWER PACK (2 Batteries)	1
Batteries	2
Raincover	1
Power supplie for camera	1
Adaptor 10ft for Batteries	1

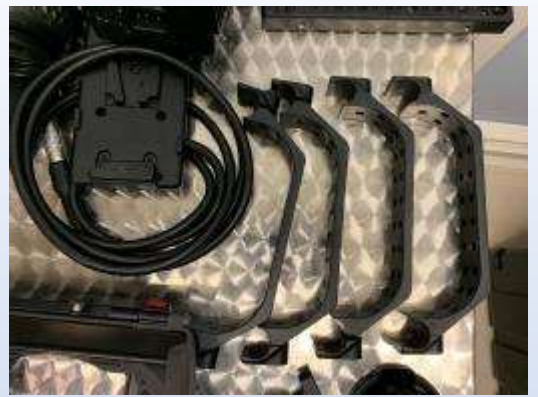
# 1. CAMERAS

## Photo gallery RED ONE



# 1. CAMERAS

## Photo gallery RED ONE



# 1. CAMERAS

## Photo gallery RED ONE



# 1. CAMERAS

## LENSES

SONY HIGH POWER  
ZOOM lens 18x 140

2





# 1. CAMERAS

# LENSES

**RED TELE : 200mm**

With accessories as shown at the photo.  
Problem *(that does not affect the use of the lens)* at the front filter module.



# 1. CAMERAS

## LENSES

RED ZOOM : 18-50 mm

RED ZOOM : 18-75 mm



# 1. CAMERAS

# LENSES

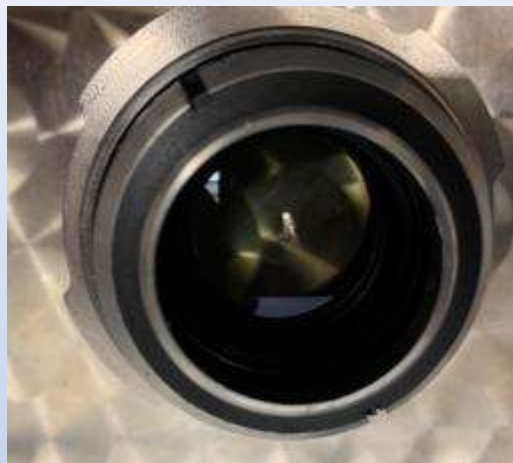
SET FLAT SAMYANG C UDSL  
24/35/50/85/ ADAPRORS (Set )



# 1. CAMERAS

## LENSES

LOMO : 150/3,2



# 1. CAMERAS

## LENSES

LOMO : 28/2,3



JUPITER-9 : 85/2



# 1. CAMERAS

## LENSES

### ANGENIEUX HD

2p. 8,3 x 125

1p. 5,3 x 64



# 1. CAMERAS

## TRIPODS

SAHTLER CINE 30HD metal legs/spreader	1
SAHTLER 20 P. carbon legs/spreader	1
SAHTLER DV 15 carbon legs/spreader	1
PANORAMA metal legs/spreader	2
Metal tripod/spreader (1)	2
Carbon tripod/ spreader	1
Tripod covers	3
Pendestal VISION 250	1



# 1. CAMERAS

## CARDS

**SSD 240GB:** KINGSTONE 11

**Video capture cards:**  
SXS-1 64GB SONY 12

**Video capture cards:**  
SXS-PRO+ 64GB. SONY 2





## 2. SOUND

### AUDIO MICROPHONE

<b>Mid-gan Sennhiser:</b> MKH 416P48	1
<b>Mid-gan:</b> AKG CH80	1
<b>Mid-gan:</b> AUDIO TECHNIKA (NEW)	1



## 2. SOUND

### Wireless TRANSMITTERS - RISIVERS

#### SONY UTX-B03 /UTX-P03 full kit 4

With accessories as shown at the photo.



#### H.D AUDIO RMS 2020

With accessories as shown at the photo.



#### AKG UHF PR/PT 40

With accessories as shown at the photo.



# 2. SOUND

## AUDIO MISCELLANEOUS

<b>Audio mix:</b> mix SQN-3	1
<b>Audio mix:</b> SOUND DEVICES 302	1
<b>Headphones:</b> (Different types )	3
<b>Audio cables:</b> (Different types )	20+
<b>Audio mixer:</b> for head phones	1
<b>Audio carry bag</b>	1
<b>12v phantom</b>	1



## 2. SOUND

### AUDIO MISCELLANEOUS

<b>Wind Cover</b>	<b>1</b>
<b>Blimp-style Microphone Windscreen, Pistol Grip and Shock mount</b>	<b>4</b>
<b>Blimp-style Microphone Windscreen + Shock mount: Marantz Professional - ZP-1 (NEW)+Wind Cover BOOM)</b>	<b>1</b>
<b>Audio Scope:</b> (Different brands, types and condition)	<b>6</b>



### 3. RACKS

#### RACK 1

<b>HyperDeck:</b> Blackmagic st. pro 2	<b>2</b>
<b>Audio playback:</b> FOSTEX R-M2.	<b>1</b>
<b>T.C generator:</b> USD SYNC DIGIDESIGN	<b>1</b>
<b>Displays:</b> Bm. SmartScope Duo 4K	<b>1</b>
<b>Sdi splitter:</b> Miniatur	<b>1</b>
<b>Headphone Amp:</b> behringer PRO_XL	<b>1</b>
<b>Tablet:</b> W 808	<b>1</b>
<b>Double sided rack:</b> with double covers	<b>1</b>
<b>line of audio plugs</b>	<b>1</b>
<b>line of BNC</b>	<b>1</b>



### 3. RACKS

#### RACK 2

<b>HyperDeck:</b> Blackmagic st. pro 2	<b>2</b>
<b>Audio playback:</b> FOSTEX R-M2.	<b>1</b>
<b>T.C generator:</b> USD SYNC DIGIDESIGN	<b>1</b>
<b>Displays:</b> Bm. SmartScope Duo 4K	<b>1</b>
<b>Sdi splitter:</b> Miniatur	<b>1</b>
<b>Headphone Amp:</b> behringer PRO_XL	<b>1</b>
<b>Tablet:</b> W 808	<b>1</b>
<b>Double sided rack:</b> with double covers	<b>1</b>
<b>line of audio plugs</b>	<b>1</b>
<b>line of BNC</b>	<b>1</b>



# 4. EDITING

## EDITING SERVERS

<b>AVID PRO TRAM BUNDLE AVID NEXIS/PRO, AXLE STARTER, 3MEDIA AVID</b>	<b>1</b>
<b>Isis/1000 20tb engine with dell N2024 switch</b>	<b>1</b>
<b>Softwer @ hartwre instalation</b>	<b>1</b>
<b>Direct attach 10g cable cop</b>	<b>2</b>
<b>UPS: TURBO X</b>	<b>4</b>
<b>Rack</b>	<b>1</b>
<b>Server: Media Vault Ciprico</b>	<b>1</b>
<b>Server: Avid 16 x 500 GB</b>	<b>1</b>
<b>Avid media com. 7.0</b>	<b>1</b>



# 4. EDITING

## EDITING SUITE

Nr 1

<b>APPLE Mac Pro 6 Core Xeon E5 3.5Ghz / 32GB RAM / 256GB SSD / Dual Fire Pro D500 3GB</b>	<b>1</b>
<b>Keyboard: MC -AVID</b>	<b>1</b>
<b>Mouse: Magic Mouse 2 APPLE</b>	<b>1</b>
<b>Video card: 10-bit 4k UHD/3G/ AJA LO4K</b>	<b>1</b>
<b>PIJAMA Backpack Mini – Dotty Jack Red</b>	<b>1</b>
<b>Monitor: LG 31MU97Z-B 31-inch Digital Cinema 4K IPS Monitor, 4096x2160, 5 ms</b>	<b>1</b>
<b>Audio Console: Phonic MM1202</b>	<b>1</b>
<b>Monitor 24": LSD POSTIUM BSM-243N3G E</b>	<b>1</b>
<b>UPS: TURBO X</b>	<b>1</b>
<b>Media composer: - Symphony Option</b>	<b>1</b>
<b>Sony: HS SxS 3.0 Reader/Writer</b>	<b>1</b>
<b>Transfer doc</b>	<b>1</b>





## 4. EDITING

EDITING SUITE

Nr 2

APPLE: tower

1

APPLE Magic Keyboard (International)

1

Mouse

1

Video card: Aja

1

Monitors: MAC

2

Monitor: ZUNZHEHG CN- 1770W

1

Loudspeakers: M - Audio

1

UPS: TURBO X

1

Sony: HS SxS 3.0 Reader/Writer

1



## 4. EDITING

EDITING SUITE

Nr 3

<b>APPLE Mac Pro 6 Core Xeon E5 3.5Ghz / 32GB RAM / 256GB SSD / Dual Fire Pro D500 3GB</b>	<b>1</b>
<b>MC KEYBOARD: AVID</b>	<b>1</b>
<b>Mouse</b>	<b>1</b>
<b>PIJAMA Backpack Mini – Dotty Jack Red</b>	<b>1</b>
<b>LG 31MU97Z-B 31-inch: D. Cinema 4K IPS Monitor, 4096x2160, 5 ms</b>	<b>1</b>
<b>Monitor: Plura PBM- 2245</b>	<b>1</b>
<b>SET speakers: ALTEC</b>	<b>1</b>
<b>Video card: 3G/DUAL-LINK/HD/SDI/O AJA LoXT</b>	<b>1</b>
<b>UPS: TURBO X</b>	<b>1</b>



## 4. EDITING

### EDITING SUITE

Nr 4

<b>Workstation:</b> HP Z620 (v2) (incl. riser card) 1 2x Socket LGA2011, DDR3 RAM	1
<b>Monitor:</b> Asus	1
<b>Mouse/ Keyboard</b>	1
<b>Audio Console:</b> Tascam TM-D1000	1
<b>Projection System</b>	
<b>Projector:</b> EPSON Full HD 1080P	1
<b>Sound amplifier:</b> Yamaha RX-V779	1
<b>Sound amplifier:</b> for Subwoofer	1
<b>Loudspeakers:</b> dolby surround Klipsch / Subwoofer	8
<b>UPS:</b> TURBO X	1
<b>BLU- REY:</b> Panasonic	1
<b>HyperDeck:</b> SSD4K Blackmagic	1
<b>Monitor Sony:</b> AC-LMD9	1



## 4. EDITING

EDITING SUITE

Nr 5

<b>Workstation:</b> HP Z620 (v2) (incl. riser card) 1 2x Socket LGA2011, DDR3 RAM	<b>1</b>
<b>Monitor:</b> LG 32VD59-B	<b>1</b>
<b>Mouse/ Keyboard</b>	<b>1</b>
<b>Loudspeakers:</b> Roland	<b>2</b>



# 5. LIGHTS

HMI		
2500W +2 BALLAST.	DESISTI	1
2500W +1 BALLAST	LITRCH	1
1200W +1 BALLAST	FILMGEAR	1
1200W +1 BALLAST	LITECH	1
1200W +1 BALLAST	DESISTI	1
575W + 2 BALLAST-	DESISTI	2
575W + 1 BALLAST-	LITECH	1
LED		
headlamps led- 30W.	DESISTI	2
BRIGHTCAST PANEL led (-) - 48W		2
TRED-D πάνελ led (Battery power supplies and other accessories USB) - 50W		2
Panel led ROSCO- 18W, 30cm X 15cm		2
Panel led 14,8W, 19cm X 11cm		3
Panel led TECPRO 24W, 30cm X 30cm		1

kinoflo	
KINOFLO μεγάλα, 4 λάμπες	2
KINOFLO μικρ, 4 λάμπες	1
Other lights	
800W QUARTZ	2
COEMAR 1000W	2
300W - DESISTI	5
1000W- DESISTI	3
300W - FILMGEAR	2
650W- FILMGEAR	2
300W- ARRI	3
650W- ARRI	7
800W- ARRI	1
1000W- ARRI	7
2000W- ARRI	2

Tripods +	
Aluminium tripods, different types	26
Hercules heavy duty tripods	4
Calculus tripods	25
Magic arms, and many other accessories.....	
Various Cinematic Filters	



## 5. Trucks

Mercedes A



Mercedes B



1. Condition: Working



2. SONY PDW-R1 Condition: Working (2 pieces)



-----  
3. MONITORS kroma 8,4in TFT, Condition: Working (2 pieces)  
with carry handle, 2audio in, build in sp. , battery adaptor...



# Εγκαταστάσεις D-port





